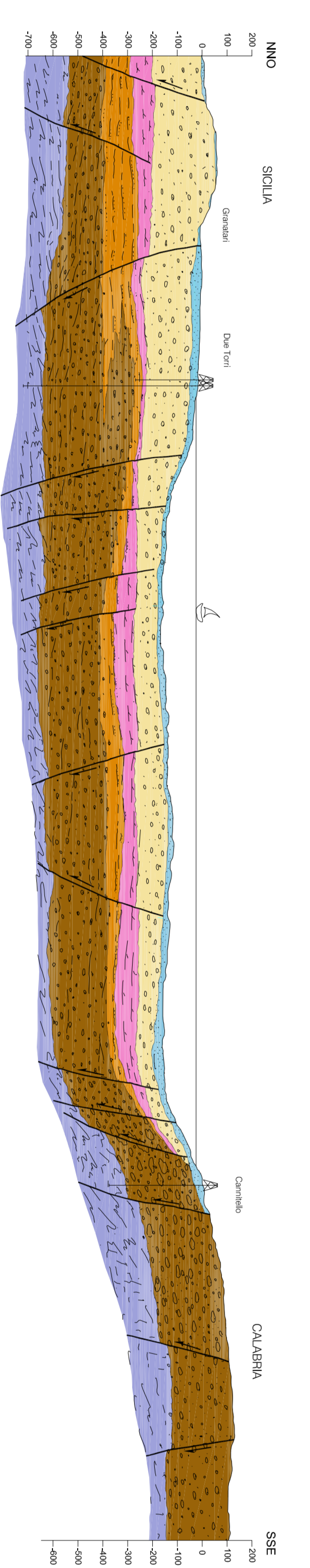


LEGENDA GEOLOGICO

- Depositi alluvionali e di piana costiera, depositi terrazzati
- Ghiaie e sabbie di Messina
- Serie evaporitica e Trubi, Calcareniti di S. Corrado
- Formazione di S. Pier Nicolo' (lato Stretto) b) facies arenoso-pellica
- Conglomerato di pezzo (lato Calabria)
- Melanofili dell'Aspromonte
- Faglie

PROFILO GEOLOGICO IN CORRISPONDENZA DELL'ATTRAVERSAMENTO



NOTE GENERALI

- Alluvial fan
- Landslides
- Termed deposits: Sands and gravels.
- Recent alluvial deposits

**Ghiaie e sabbie di Messina Fm.**  
Gravel, granitic and grey-yellowish or reddish sandstone, sometimes poorly sorted, concentrated to high angle. The pebbles, primarily from crystalline basement, are embayed, surrounded by fine sandstone. The matrix is composed of quartzose sands are present. Glauconitic fine silts and siltstone fine.

**S. Corrado calcarenites and sands**  
The calcarenites are composed in parallel strata up to 20 m thick, sometimes alternating to thin sandy layers. They unconformably lay upon the Trubi Fm. or directly upon the MNN16a-MNN16b-17 bicozones and MNN16f-MNN16g (P. Serracalle).

**La Massa Fm.**  
Sandy matrix and sands grading upward to alternating sands and calcarenites. Nanofoamal assemblages of the MNN16a-MNN16b-17 bicozones and MNN16f-MNN16g (P. Serracalle).

**Torreme Tono clays**  
Grey to greenish many clays, unconformably lying upon the Trubi Fm. in the Torreme Grotto area. They are referable to the EARLY TROCENNE (Zanetti, upper part).

**Trubi Fm.**  
Whish, marly-mudstone, often sandy, yielding abundant micaceous, silty-clays and marly-clays. In this area the silty intercalation yields ramiforma pseudonutriculae, H. stalis (bicozones MNN16b to MNN16g) referred to a Serravallo-early Troceni age. In the upper part contain nanofossil assemblage characterized by Discoscyra quadrangula and Ammanitula delicatula which suggest a late Troceni age.

**San Pier Nicolo' Fm.**  
Polypore, matrix supported conglomerates, with elements of the crystalline basement of all degree and substantially sandstone, silty-clays and marly-clays. In this area the silty intercalation yields ramiforma pseudonutriculae, H. stalis (bicozones MNN16b to MNN16g) referred to a Serravallo-early Troceni age. In the upper part contain nanofossil assemblage characterized by Discoscyra quadrangula and Ammanitula delicatula which suggest a late Troceni age.

**Aspromonte Unit**  
Stratigraphic basement constituted by highly permeable with micaceous portions mostly concordant, pigmented gneisses, and late Variscan plutonic complex.

**KABLO-CALABRIDE CHAIN UNITS**  
Retirement bibliography:  
A multidisciplinary approach to the reconstruction of the Quaternary evolution of the Messina Strait area" - (P. Giamberini, A. Di Stefano, S. Carbone, F. Lemini, A. Del Ben).

**PONTE SULLO STRETTO DI MESSINA**  
PROGETTO DEFINITIVO

EUROLINK S.p.A.  
SOCIETA' ITALIANA PER CONDOTTE D'ACQUA S.p.A. (Mandato)  
COOPERATIVA MANUTENZIONE CANTIERI S.p.A. (Mandato)  
SIRIMAWANA - HANAWA HEAVY INDUSTRIES CO. Ltd. (Mandato)  
ACI S.p.A. - CONSORZIO STRADE (Mandato)

OPERA D'ATTRAVERSAMENTO **P80005\_F01**  
STUDI DI BASE  
ELEMENTI DI CARATTERE GENERALE  
PLANIMETRIA E PROFILO GEOLOGICI IN CORRISPONDENZA DELL'ATTRAVERSAMENTO

PROGETTISTA	EUROLINK S.p.A.	STRETTO DI MESSINA	AMMINISTRATORE DELEGATO
PROGETTO	OPERA D'ATTRAVERSAMENTO	STRETTO DI MESSINA	CAPIGRUPPO
REDAZIONE	EUROLINK S.p.A.	STRETTO DI MESSINA	CAPIGRUPPO
VERIFICA	EUROLINK S.p.A.	STRETTO DI MESSINA	CAPIGRUPPO
APPROVAZIONE	EUROLINK S.p.A.	STRETTO DI MESSINA	CAPIGRUPPO